

# THIS JUST IN: POLLING DATA WEBINAR

**Presented by:**

*Jen Peacock, Policy Director of  
The Michigan Center for Youth  
Justice*



**MCYJ**  
MICHIGAN CENTER *for* YOUTH JUSTICE

# BACKGROUND

- In 2023, Lt. Governor Gilchrist signed the *Justice for Kids and Communities* package into law, reforming our juvenile justice system.
- These new laws are just some of the Juvenile Justice Reform Task Force's recommendations to improve our system.

# PURPOSE OF THE POLL

- To continue to be informed about not only elements of the most recent legislative changes but also learn about what Michiganders think about the juvenile justice system;
- To get a sense of the current landscape of juvenile justice reform in Michigan and
- To explore a few key areas of interest, including juvenile defense, workforce development, data, and community-based care.

# METHODOLOGY

- Poll Conducted by Marketing Resource Group
- 80% cell phones (480), 20% landlines (120)
- 600 completed surveys statewide, MOE +/- 4%
- Registered Michigan Voters
- Primary survey conducted March 25th - March 27th, 2024



# KEY AREA #1: JUVENILE DEFENSE



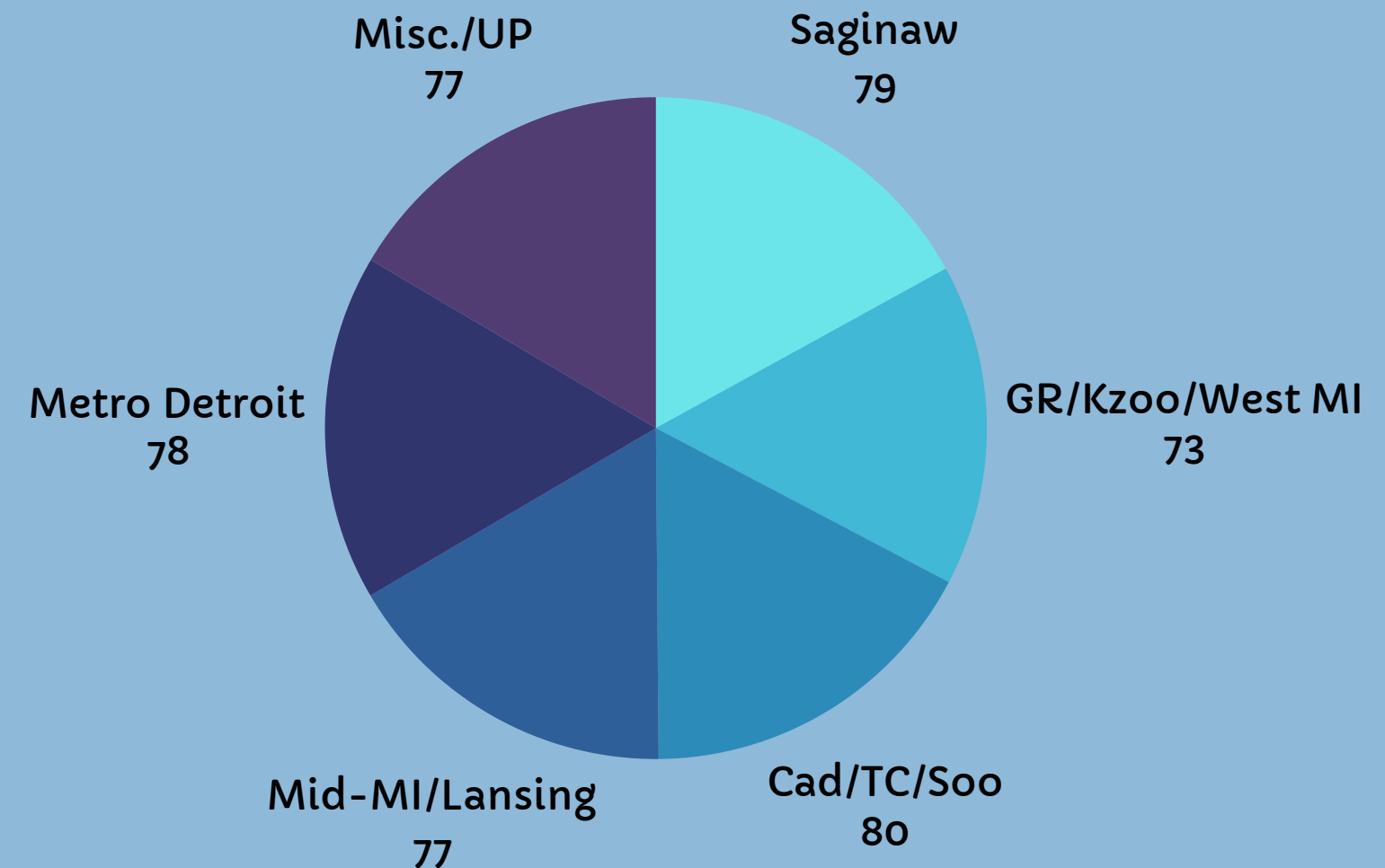
# BACKGROUND: JUVENILE DEFENSE

- Michigan has no centralized structure and minimal statewide standards, supports, or resources for juvenile public defense.
- Local systems appoint counsel at different stages, which can negatively affect the outcome of a youth's case and lead to uneven access for youth to trained and qualified defenders.
- House Bill 4630 was a key component of the *Justice for Kids and Communities* bill package but did not advance out of the Michigan State Senate, despite unanimous support from the Task Force.

# JUVENILE DEFENSE

- **Prompt:** *“Supporters of the Michigan Indigent Defense Commission legislation say it will reduce re-offending and provide Michigan's juveniles with the help and support they need to grow into successful members of society. Does this make you more or less likely to support this legislation?”*
- **Total More Likely: 77%**
- **Total Less Likely: 7%**

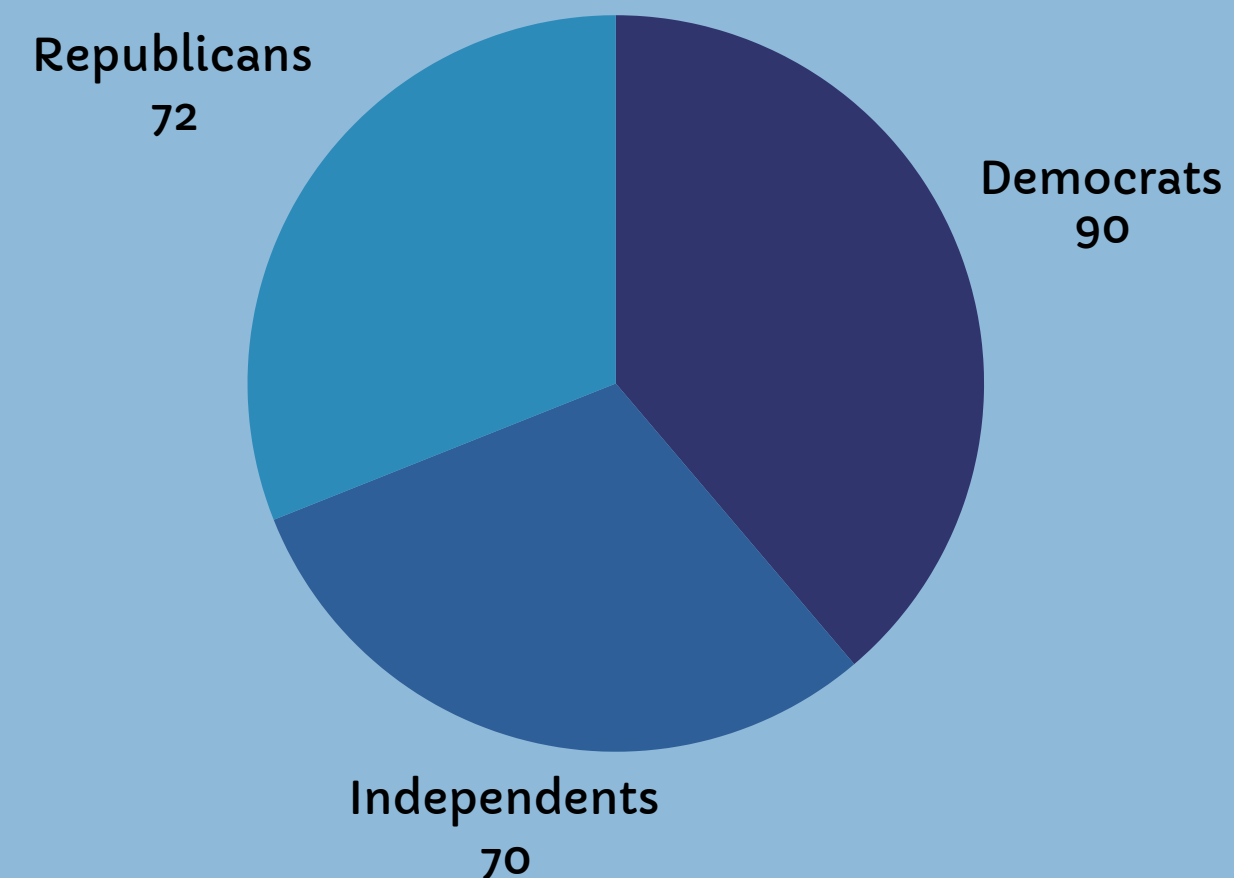
**Geographic Breakdown of Total Support:**



# JUVENILE DEFENSE

- **Prompt:** *Supporters of the Michigan Indigent Defense Commission legislation say it will reduce re-offending and provide Michigan's juveniles with the help and support they need to grow into successful members of society. Does this make you more or less likely to support this legislation?*
- **Total More Likely: 77%**
- **Total Less Likely: 7%**

**Breakdown of Total Support by Party Affiliation:**

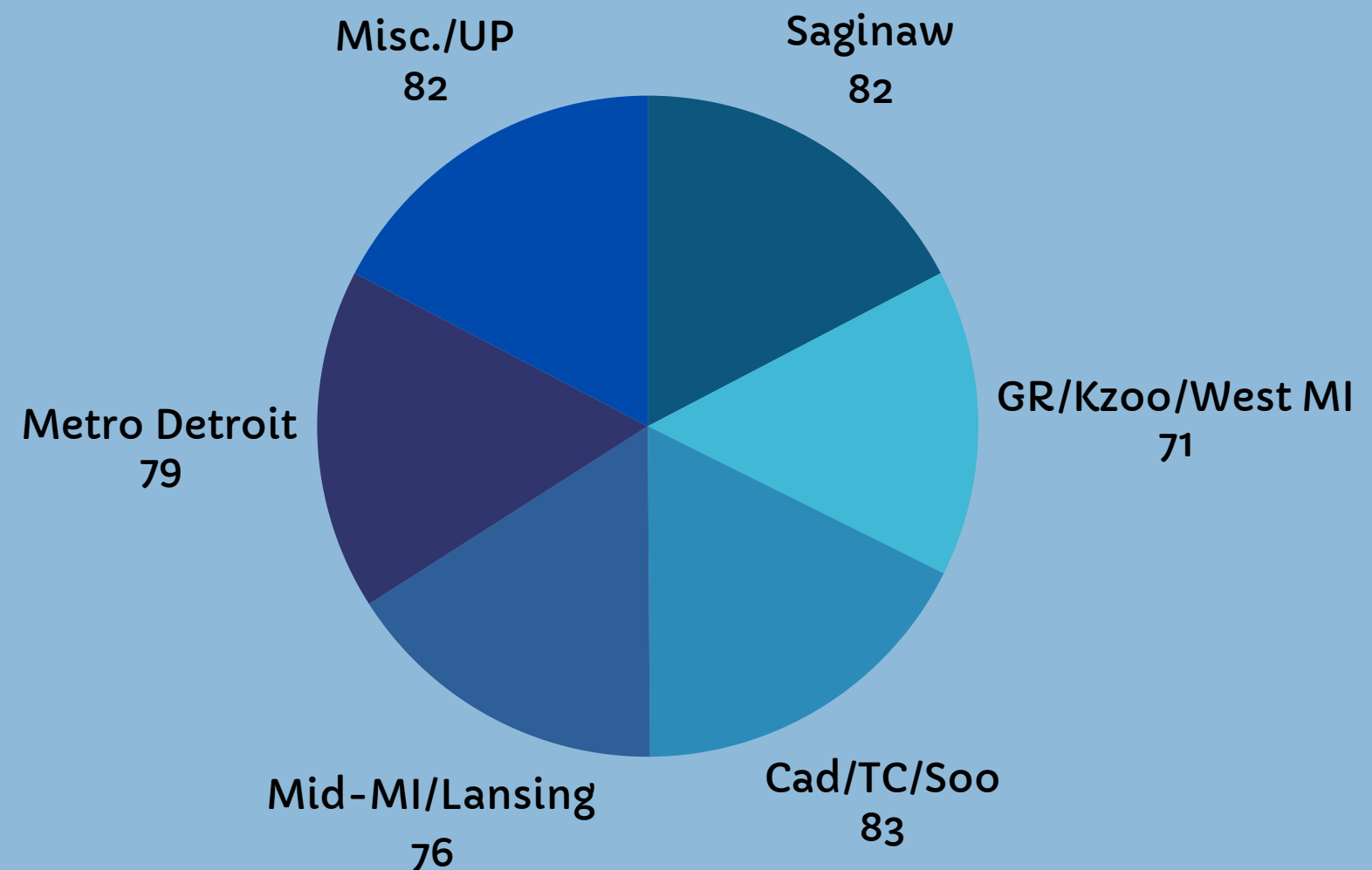




# JUVENILE DEFENSE

The polling data reveals that a significant majority, **77.8%**, agree that elected officials in the Michigan State Legislature have a responsibility to pass legislation ensuring that youth in the juvenile defense system receive the same resources as adults.

Geographic Breakdown of Agreement:

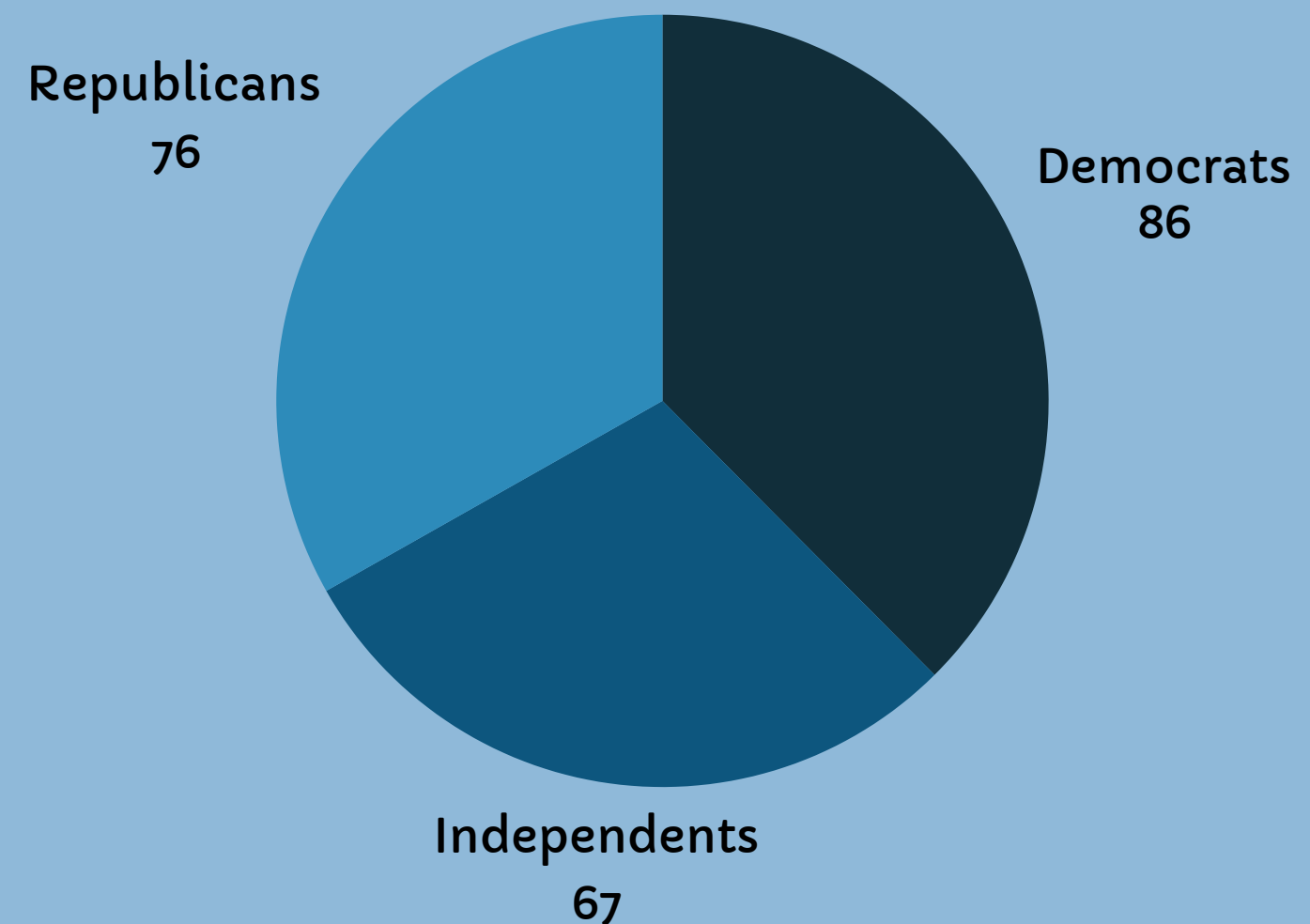


Party Affiliation Breakdown →

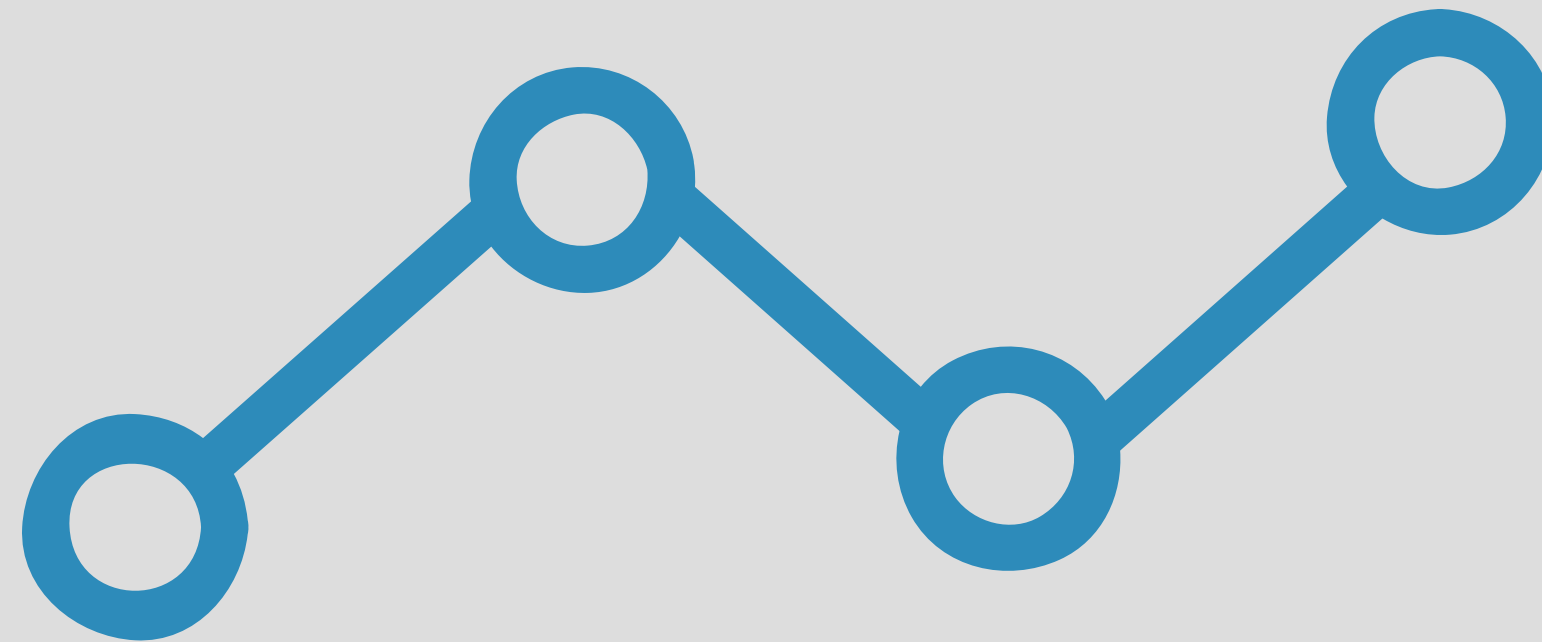
# JUVENILE DEFENSE

The polling data shows overwhelming agreement as Michiganders came together across party affiliations in support of ensuring justice-impacted young people have their constitutional right to juvenile defense and equitable legal representation.

Party Affiliation Breakdown of Agreement:



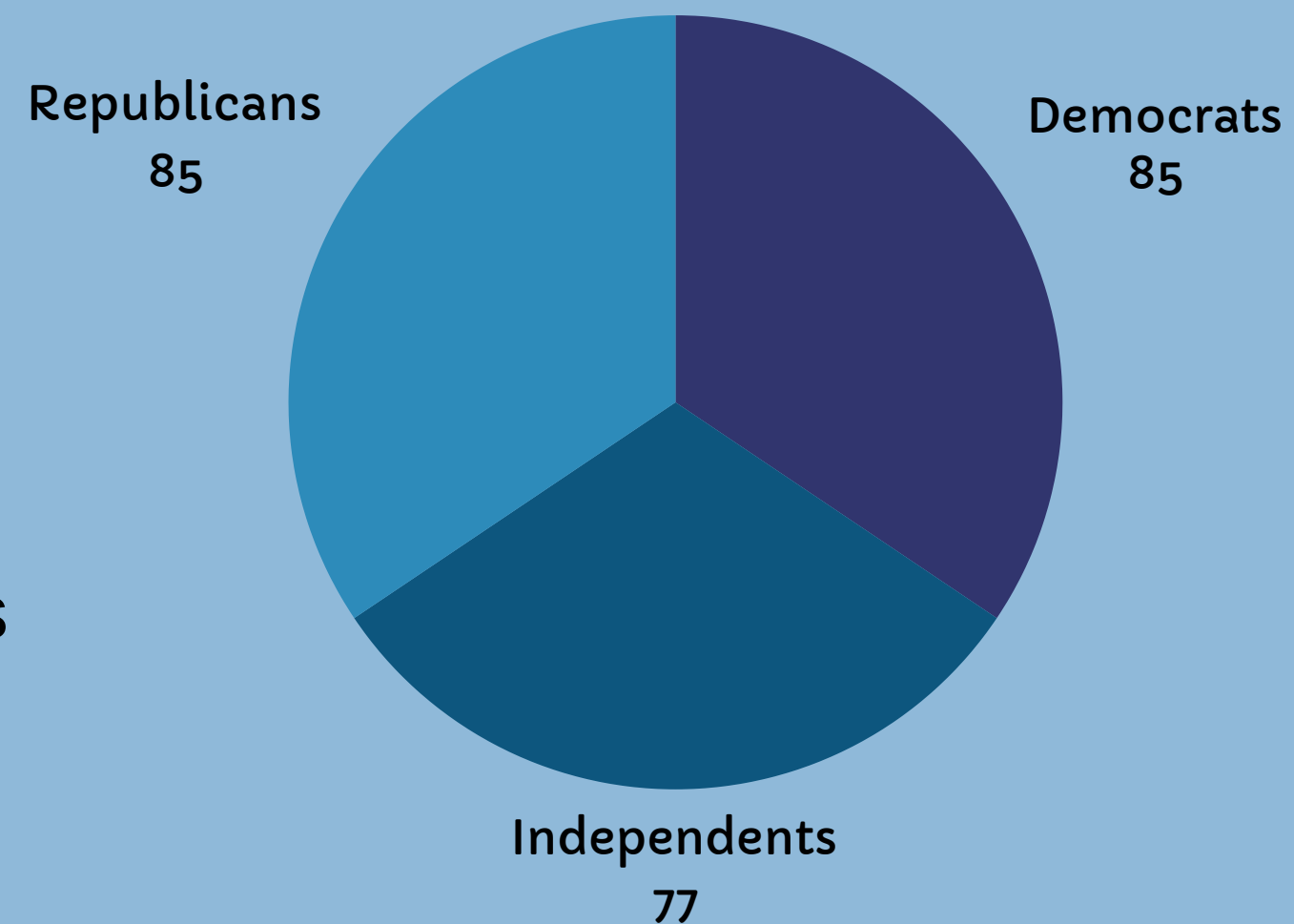
# KEY AREA #2: WORKFORCE DEVELOPMENT



# WORKFORCE DEVELOPMENT

The polling results show that a significant majority, **83%**, agree that **workforce development programs** serve as both preventive and rehabilitative care for youth at risk of becoming involved with the **juvenile justice system**. This belief is widely supported across political affiliations and racial demographics:

Party Affiliation Breakdown of Agreement:

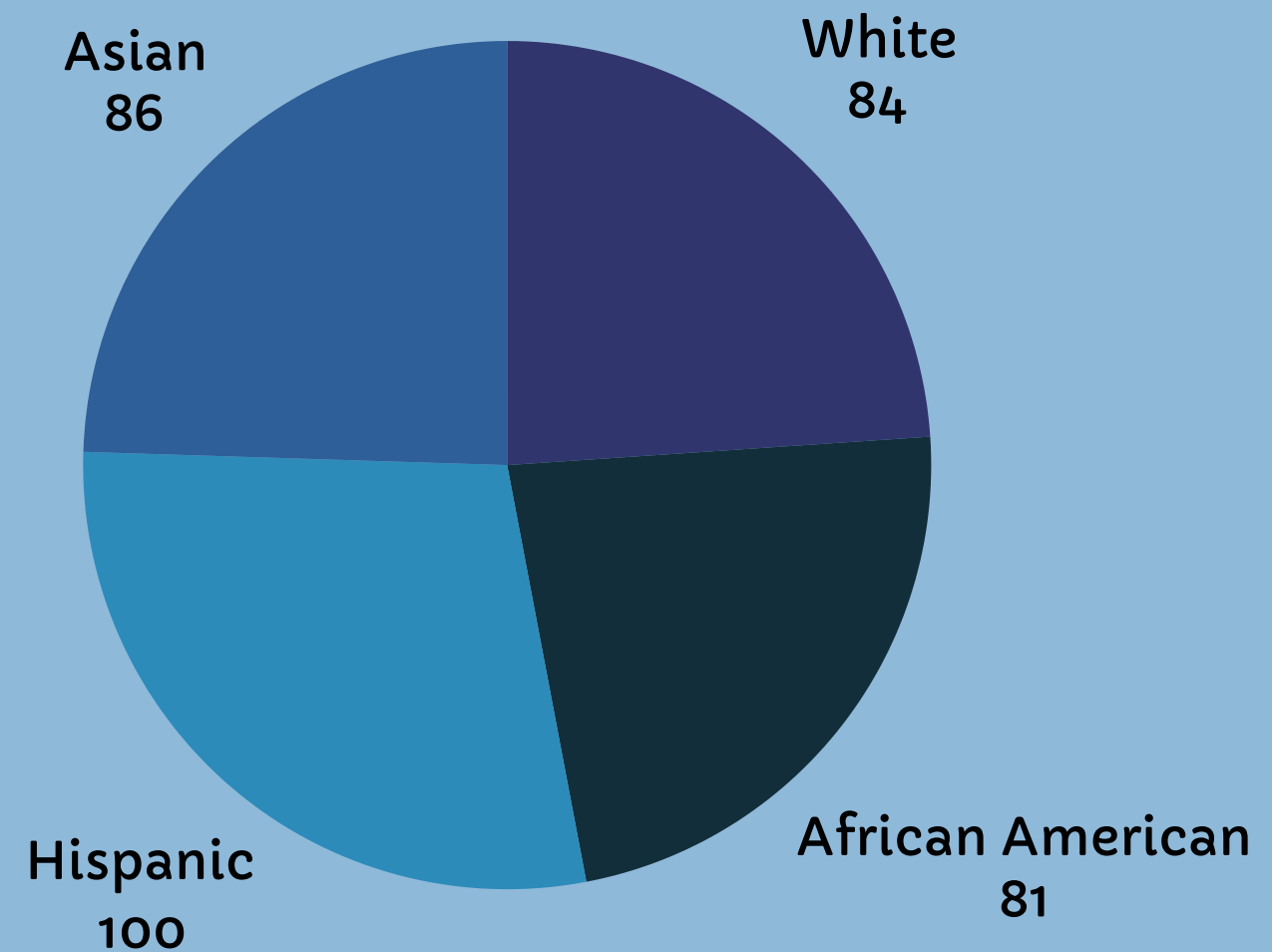


*Race Affiliation Breakdown* →

# WORKFORCE DEVELOPMENT

The polling data highlights widespread support across racial demographics in agreement with the benefits of workforce development programs for justice-involved youth, including providing a safe space for young people to receive preventative and rehabilitative care.

**Race Affiliation Breakdown of Agreement:**



# WORKFORCE DEVELOPMENT

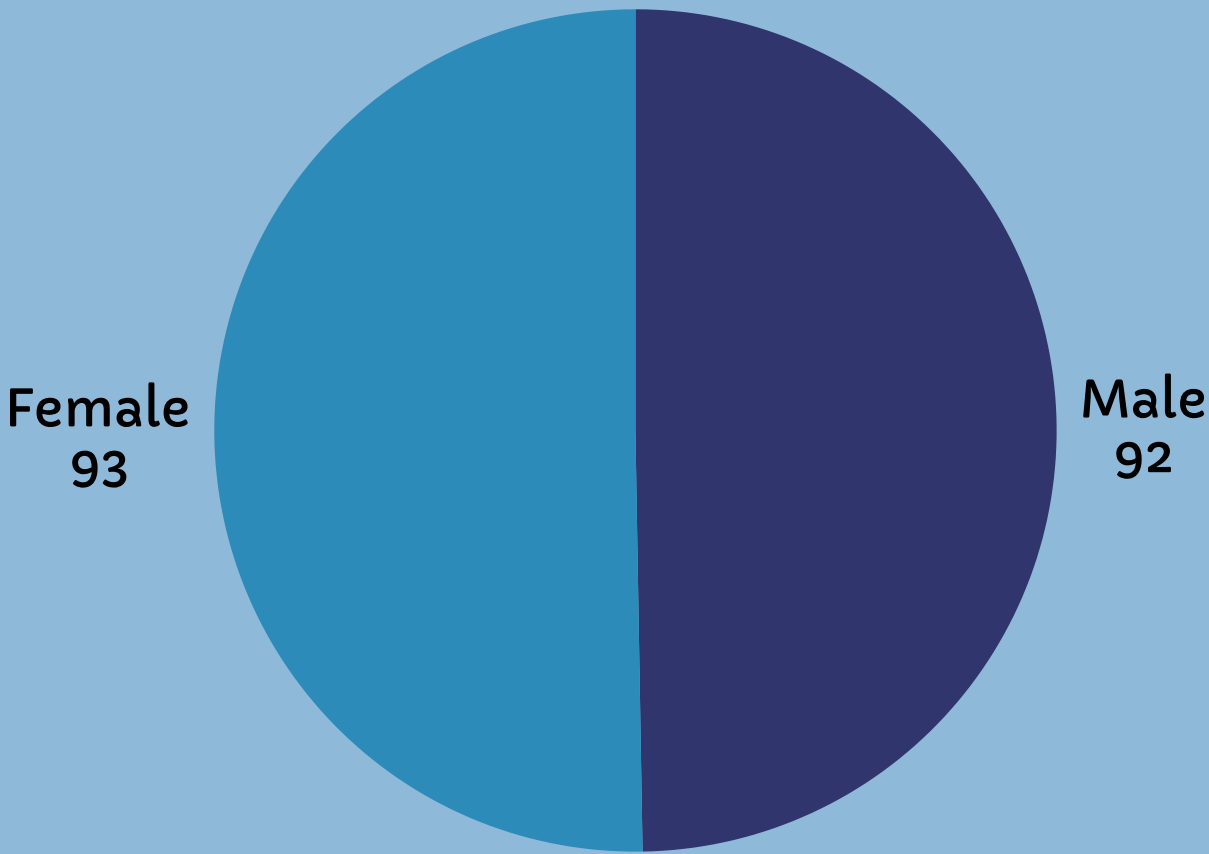
- The polling results indicate overwhelming support, **with 92% of respondents agreeing that youth involved in or at risk of becoming involved in the juvenile justice system should be given workforce development opportunities to promote safer communities.**
- This support is consistent across various geographic regions and genders.

*Geographic & Gender Affiliation Breakdown*

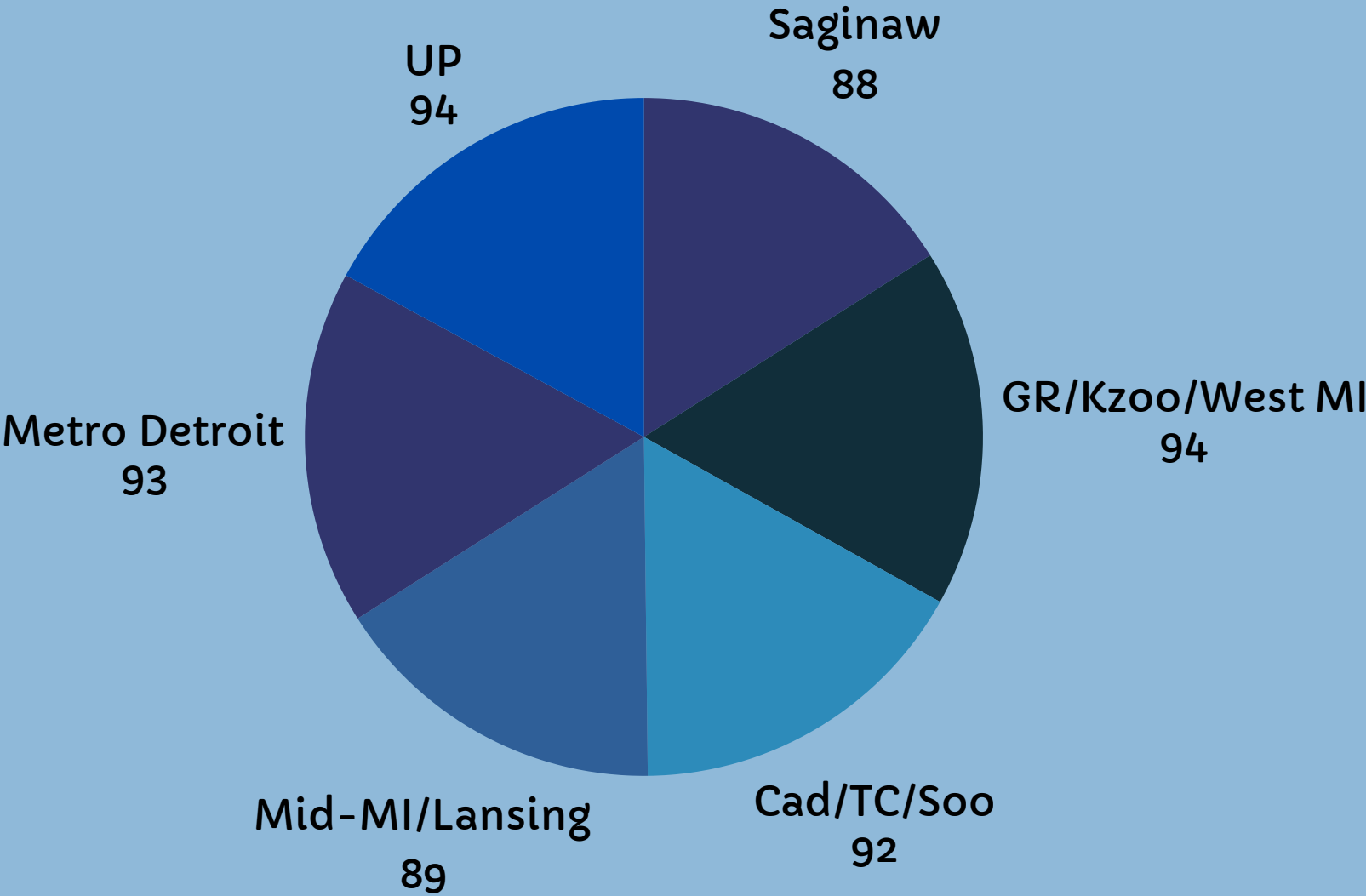


# WORKFORCE DEVELOPMENT

Gender Affiliation Breakdown of Agreement:



Geographical Affiliation Breakdown of Agreement:



# KEY AREA #3: DATA TRANSPARENCY





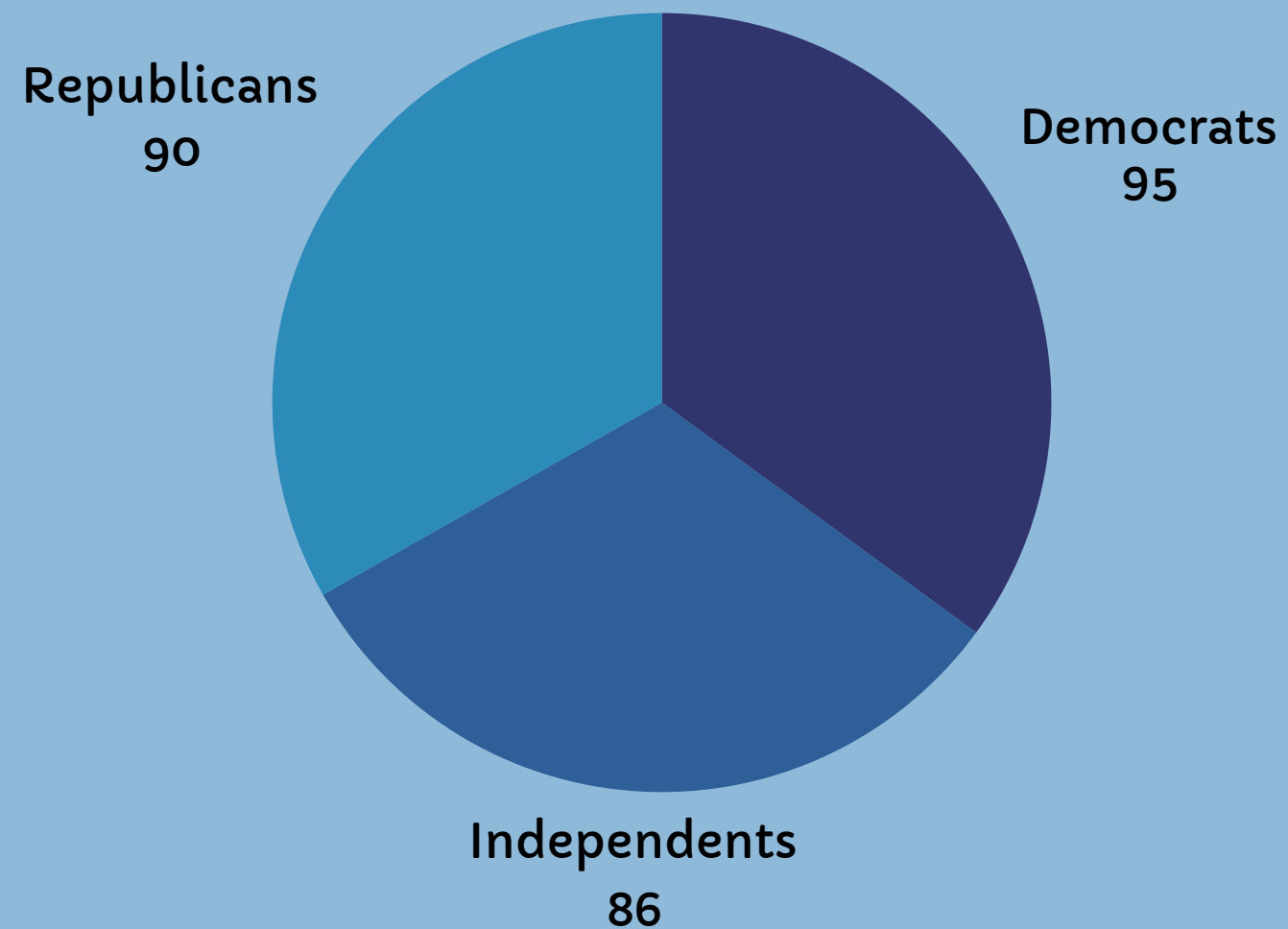
# DATA TRANSPARENCY

- The polling results reveal that a strong majority, **90%**, agree that **the legislature should require regular, publicly available reports on juvenile justice system programs, services, and outcomes.**
- This sentiment is consistently supported across different geographic regions and political affiliations:

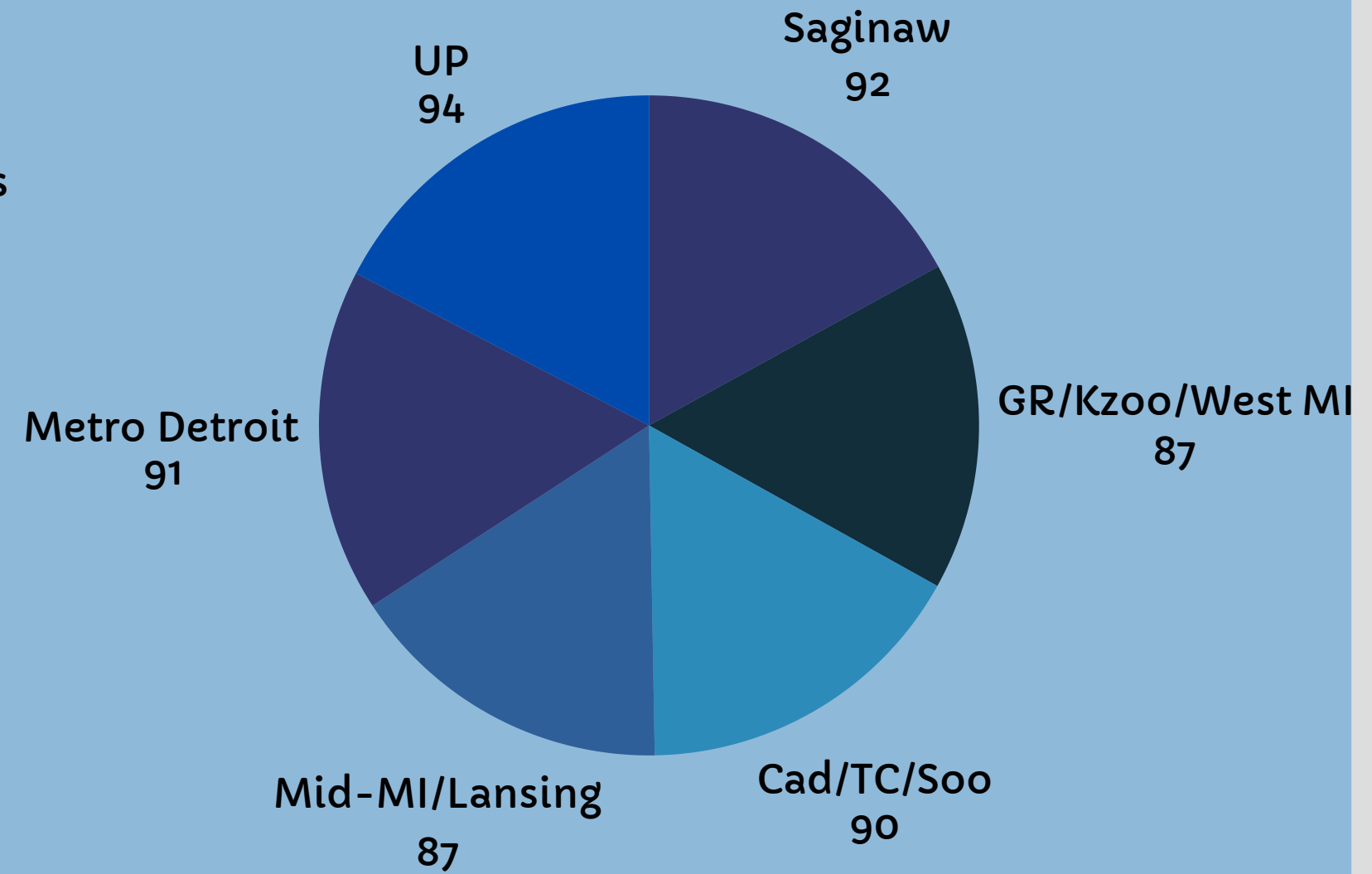
*Party & Geographic Affiliation Breakdown* →

# DATA TRANSPARENCY

Party Affiliation Breakdown of Agreement:



Geographic Affiliation Breakdown of Agreement:



# DATA TRANSPARENCY

- The polling results indicate strong support, with **86%** of respondents **agreeing that increasing transparency in juvenile justice data would positively impact communities by enhancing accountability, supporting reform efforts, and ensuring equitable outcomes for all youth, regardless of race, ethnicity, or socioeconomic status.**

# KEY AREA #4: COMMUNITY-BASED CARE



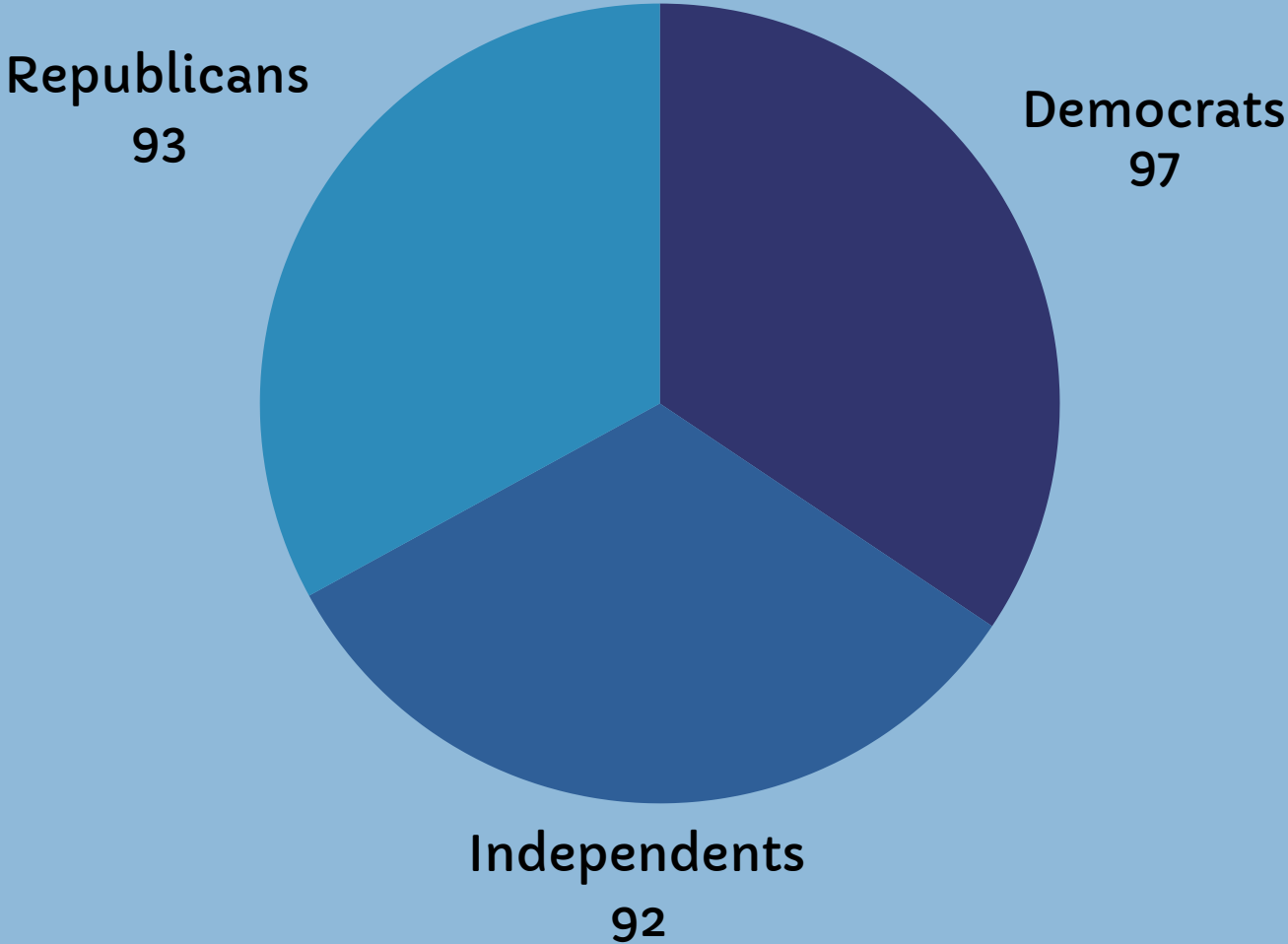
# COMMUNITY-BASED CARE

- The polling data shows overwhelming support, **with 93% of respondents agreeing that more community-based alternatives—such as drug use treatment, counseling, and family therapy—should be available to youth in the juvenile justice system.**
- This support is widespread across various geographic regions, political affiliations, age groups, and genders:

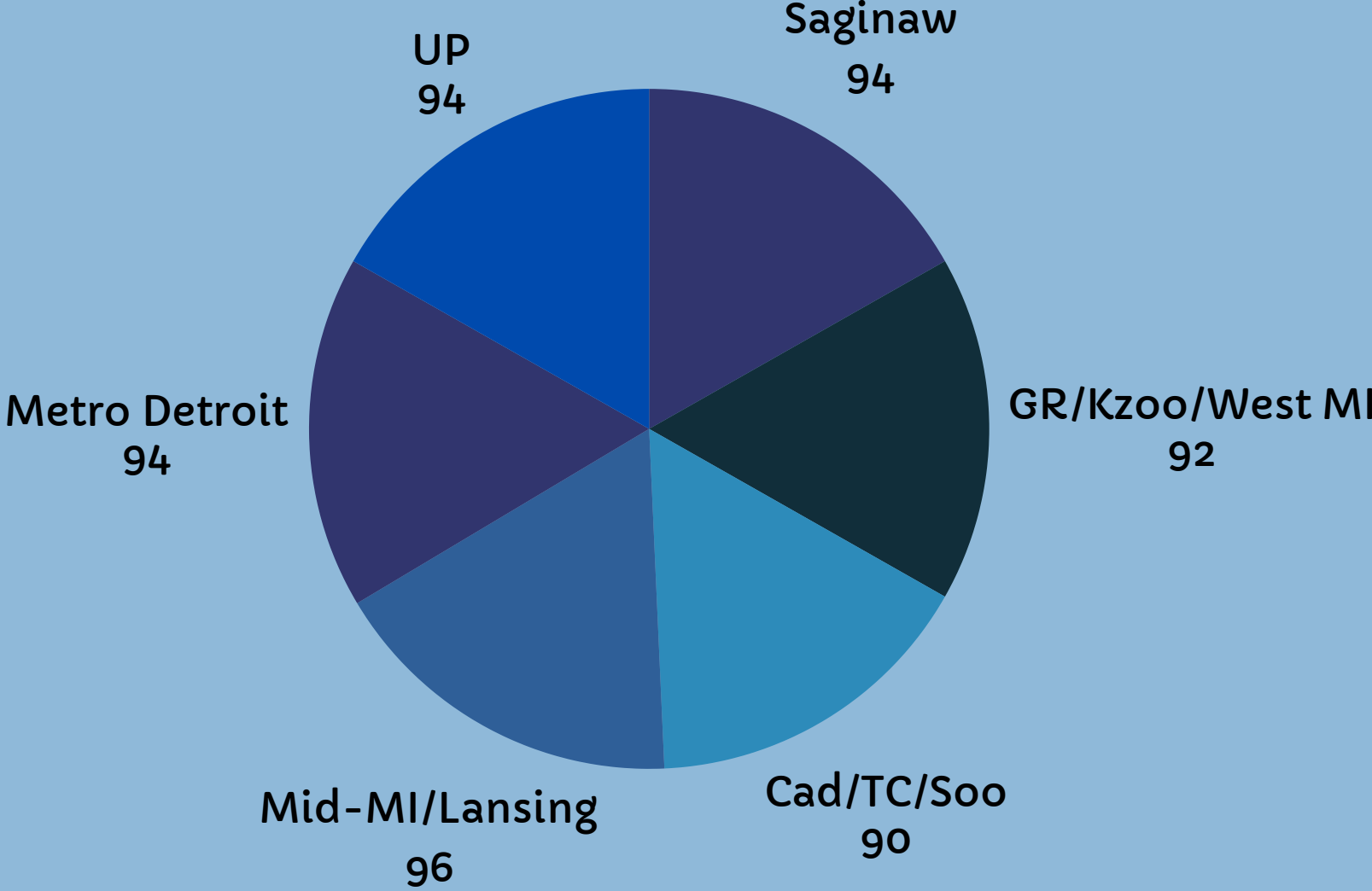
*Party & Geographic Affiliation Breakdown* →

# COMMUNITY-BASED CARE

Party Affiliation Breakdown of Agreement:



Geographic Affiliation Breakdown of Agreement:

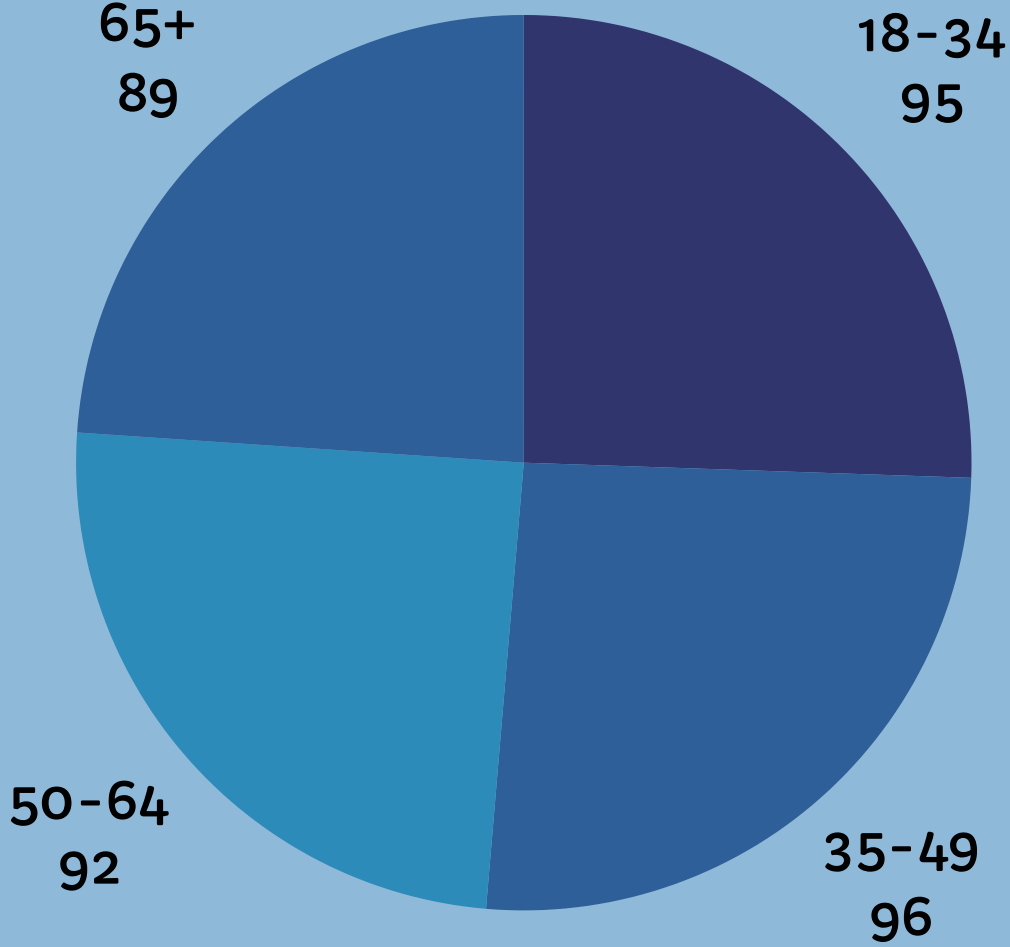


Age & Gender Affiliation Breakdown

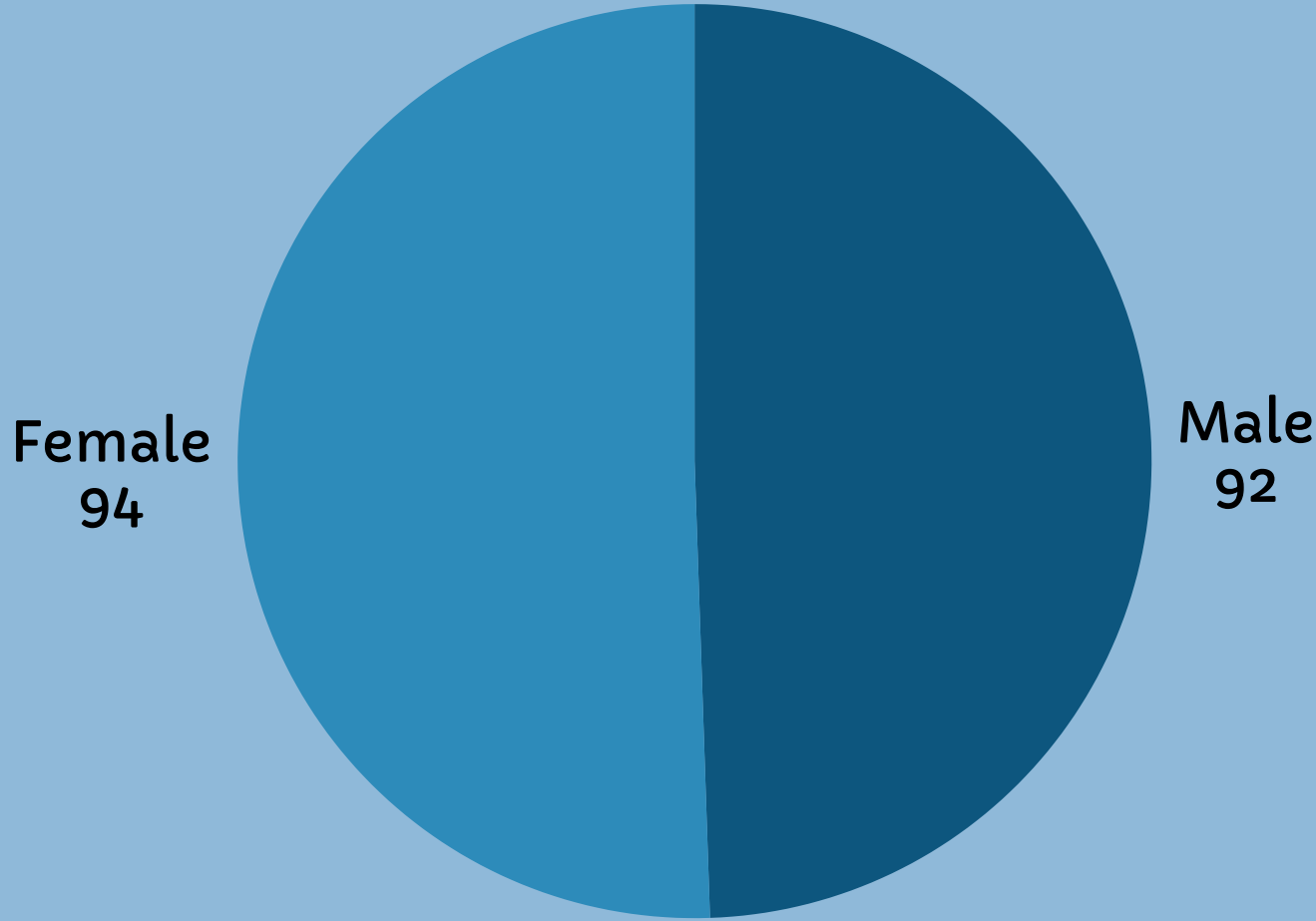


# COMMUNITY-BASED CARE

Age Affiliation Breakdown of Agreement:



Gender Affiliation Breakdown of Agreement:



# HOW TO USE THIS DATA



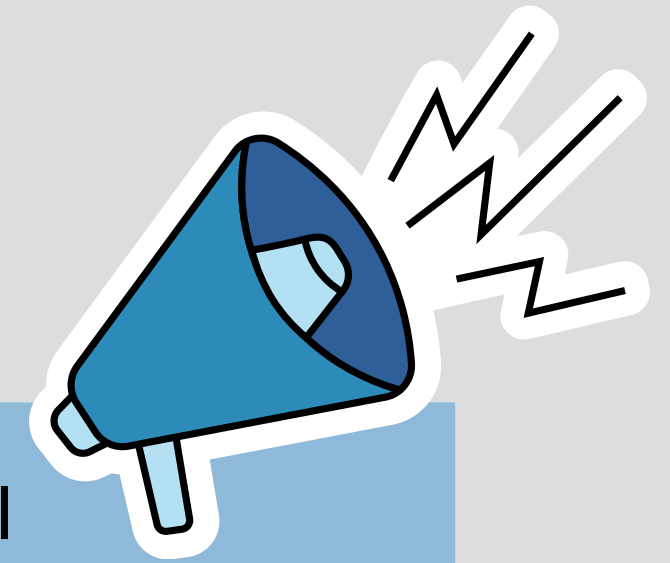




# HOW TO USE THIS DATA: MESSAGING FINDINGS

- **Social messaging** regarding juvenile justice issues was **overwhelmingly more motivating and agreeable** than other messaging like fiscal or political. Legislation can be confusing and/or divisive as it relates to our political system, which could be an explanation for the smaller, but still significant, supportive/agreeable aggregate percentages.
- Mentioning fiscal impacts decreases support, while **incorporating phrases like “community-based alternatives”** in an informal capacity and **“safer communities”** increase support for the accompanying initiative.

# HOW TO USE THIS DATA: ADVOCACY



- **Targeted Advocacy:** The data shows broad support across political parties, geographic regions, and demographic groups for community-based alternatives and transparency in the juvenile justice system. Advocates can use this information to push for legislation by showing policymakers that their constituents overwhelmingly support these initiatives.
- **Grassroots Mobilization:** Knowing which regions or demographic groups are particularly supportive can help in mobilizing these groups to advocate for policy changes, write to their representatives, or participate in public forums.

# HOW TO USE THIS DATA: PUBLIC AWARENESS & EDUCATION



- **Public Communication:** The data can be used to create public awareness campaigns that **emphasize the broad support** for juvenile justice reforms. Highlighting the consensus across different political and demographic groups can **help depoliticize the issue** and make it more about community well-being.
- **Educational Programs:** Educational initiatives can be **tailored to regions or demographics that may need more information or engagement** on these issues, ensuring that all community members understand the importance and benefits of these programs.

# RESOURCES

**Download our information sheets today!**



# THANK YOU!

**Questions?** Reach out to Jen Peacock at  
[jpeacock@miyouthjustice.org](mailto:jpeacock@miyouthjustice.org)

